

WELLINGTON CITY COUNCIL ISLAND BAY PARADE UPGRADE THE PARADE - ISLAND BAY CONCEPT DESIGN

DRAWING Rev Title

GENERAL

- 1003072-80 1 Drawing List & Location Plan

OVERALL PLANS

- 1003072-90 1 Option A & B: Overall Plan
- 1003072-91 1 Option C & D: Overall Plan

DETAILED PLANS

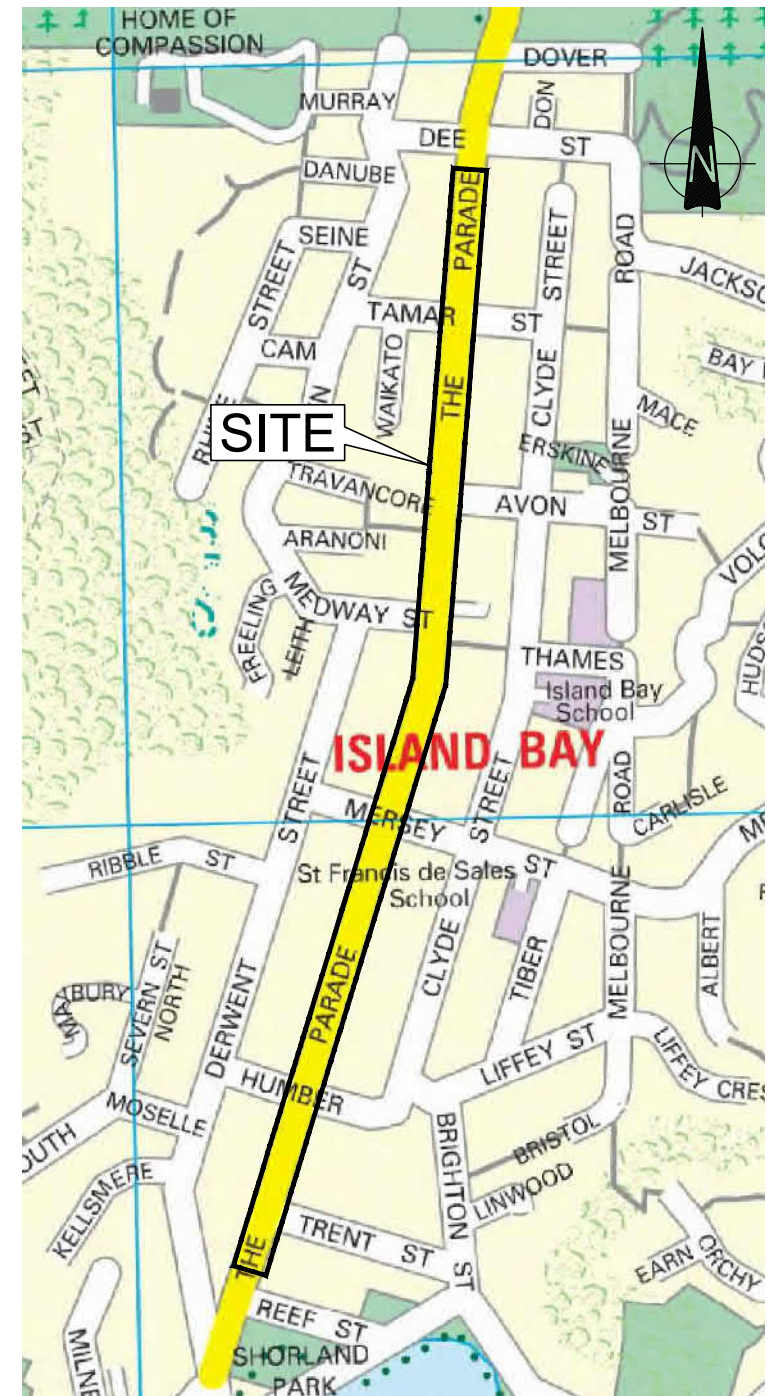
- 1003072-100 1 Option A: Dee Street (Sheet 1 of 9)
- 1003072-101 1 Option A: Dee Street to Tamar Street (Sheet 2 of 9)
- 1003072-102 1 Option A: Tamar Street to Avon Street (Sheet 3 of 9)
- 1003072-103 1 Option A: Avon Street to Medway Street (Sheet 4 of 9)
- 1003072-104 1 Option A: Medway Street to Mersey Street (Sheet 5 of 9)
- 1003072-105 1 Option A: Mersey Street (Sheet 6 of 9)
- 1003072-106 1 Option A: Mersey Street to Humber Street (Sheet 7 of 9)
- 1003072-107 1 Option A: Humber Street (Sheet 8 of 9)
- 1003072-108 1 Option A: Reef Street (Sheet 9 of 9)

- 1003072-200 1 Option B: Dee Street (Sheet 1 of 9)
- 1003072-201 1 Option B: Dee Street to Tamar Street (Sheet 2 of 9)
- 1003072-202 1 Option B: Tamar Street to Avon Street (Sheet 3 of 9)
- 1003072-203 1 Option B: Avon Street to Medway Street (Sheet 4 of 9)
- 1003072-204 1 Option B: Medway Street to Mersey Street (Sheet 5 of 9)
- 1003072-205 1 Option B: Mersey Street (Sheet 6 of 9)
- 1003072-206 1 Option B: Mersey Street to Humber Street (Sheet 7 of 9)
- 1003072-207 1 Option B: Humber Street (Sheet 8 of 9)
- 1003072-208 1 Option B: Reef Street (Sheet 9 of 9)

- 1003072-300 1 Option C: Dee Street (Sheet 1 of 9)
- 1003072-301 1 Option C: Dee Street to Tamar Street (Sheet 2 of 9)
- 1003072-302 1 Option C: Tamar Street to Avon Street (Sheet 3 of 9)
- 1003072-303 1 Option C: Avon Street to Medway Street (Sheet 4 of 9)
- 1003072-304 1 Option C: Medway Street to Mersey Street (Sheet 5 of 9)
- 1003072-305 1 Option C: Mersey Street (Sheet 6 of 9)
- 1003072-306 1 Option C: Mersey Street to Humber Street (Sheet 7 of 9)
- 1003072-307 1 Option C: Humber Street (Sheet 8 of 9)
- 1003072-308 1 Option C: Reef Street (Sheet 9 of 9)

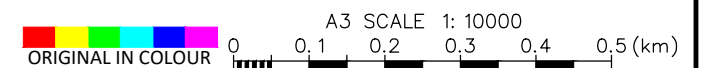
DRAWING Rev Title

- 1003072-400 1 Option D: Dee Street (Sheet 1 of 9)
- 1003072-401 1 Option D: Dee Street to Tamar Street (Sheet 2 of 9)
- 1003072-402 1 Option D: Tamar Street to Avon Street (Sheet 3 of 9)
- 1003072-403 1 Option D: Avon Street to Medway Street (Sheet 4 of 9)
- 1003072-404 1 Option D: Medway Street to Mersey Street (Sheet 5 of 9)
- 1003072-405 1 Option D: Mersey Street (Sheet 6 of 9)
- 1003072-406 1 Option D: Mersey Street to Humber Street (Sheet 7 of 9)
- 1003072-407 1 Option D: Humber Street (Sheet 8 of 9)
- 1003072-408 1 Option D: Reef Street (Sheet 9 of 9)



LOCATION PLAN
SCALE 1: 10000

● Denotes drawing this issue: 28/07/2017



DRAWING STATUS: CONCEPT DESIGN

DESIGNED :	JASZ	Jul. 17
DRAWN :	AGDS	Jul. 17
DESIGN CHECKED :	RWD	Jul. 17
DRAFTING CHECKED :	RBS	Jul. 17
CADFILE :	\\1003072-80.dwg	
APPROVED :	NOT FOR CONSTRUCTION	
This drawing is not to be used for construction purposes unless signed as approved		
0	Concept Design Issue	BSS Jul. 17
REVISION DESCRIPTION	BY	DATE

NOTES :

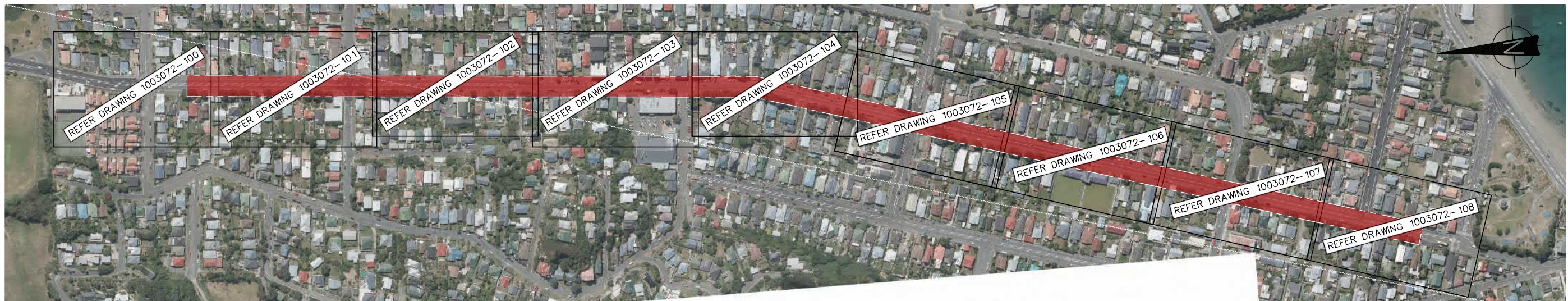
- All dimensions are in millimetres unless noted otherwise.
- Street map sourced from Terralink International (Copyright 2002–2005 Terralink International Limited and its licensors).

REFERENCE :

Level 4, 2 Hunter St, Wellington
Tel. (04) 381 8560 Fax. (09) 307 0265
www.tonkintaylor.co.nz

CLIENT, PROJECT	WELLINGTON CITY COUNCIL ISLAND BAY PARADE UPGRADE	
TITLE	THE PARADE – ISLAND BAY Drawing List & Location Plan	
SCALES (AT A3 SIZE)	DWG. No.	REV.
AS SHOWN	1003072-80	0

OPTION A – ROADSIDE CYCLE LANE – ORIGINAL LAYOUT WITH ENHANCEMENTS



OPTION B – ONE-WAY SEPARATED KERBSIDE CYCLEWAY – ROAD LEVEL CURRENT LAYOUT WITH ENHANCEMENTS



LEGEND

 Extent of works

DESIGNED :	JASZ	Jul. 17
DRAWN :	AGDS	Jul. 17
DESIGN CHECKED :	RWD	Jul. 17
DRAFTING CHECKED :	RBS	Jul. 17
CADFILE :	\\1003072-90_91.dwg	
APPROVED :	NOT FOR CONSTRUCTION	
This drawing is not to be used for construction purposes unless signed as approved		
0	Concept Design Issue	BSS Jul. 17
REVISION DESCRIPTION	BY	DATE

NOTES :

- All dimensions are in millimetres unless noted otherwise.
- Aerial photo sourced from Linz Data Service <https://data.linz.govt.nz/layer/1871-wellington-01m-urban-aerial-photos-2012-2013/>, licensed by LINZ for re-use under the Creative Commons Attribution 3.0 New Zealand licence (CC BY 3.0 NZ)
Coordinate Datum: NZGD2000, Wellington Circuit Coordinates.
Origin: 41 18 04S 174 46 35E 800,000mN 400,000mE
Level Datum: LINZ (MSL) Wellington Vertical Datum 1953

REFERENCE :



Level 4, 2 Hunter St, Wellington
Tel. (04) 381 8560 Fax. (09) 307 0265
www.tonkintaylor.co.nz

DRAWING STATUS: CONCEPT DESIGN

CLIENT, PROJECT	WELLINGTON CITY COUNCIL ISLAND BAY PARADE UPGRADE	
TITLE	THE PARADE – ISLAND BAY Option A & B: Overall Plan	
SCALES (AT A3 SIZE)	DWG. No.	REV.
1:5000	1003072-90	0

OPTION C – ONE-WAY SEPARATED KERBSIDE CYCLEWAY – ABOVE ROAD LEVEL



OPTION D – ONE-WAY SEPARATED KERBSIDE CYCLEWAY – ABOVE ROAD LEVEL, WITH ANGLE PARKING



LEGEND

 Extent of works

DESIGNED :	JASZ	Jul. 17
DRAWN :	AGDS	Jul. 17
DESIGN CHECKED :	RWD	Jul. 17
DRAFTING CHECKED :	RBS	Jul. 17
CADFILE :	\\1003072-90_91.dwg	
APPROVED :	NOT FOR CONSTRUCTION	
This drawing is not to be used for construction purposes unless signed as approved		
0	Concept Design Issue	BSS Jul. 17
REVISION DESCRIPTION	BY	DATE

NOTES :

- All dimensions are in millimetres unless noted otherwise.
- Aerial photo sourced from Linz Data Service <https://data.linz.govt.nz/layer/1871-wellington-01m-urban-aerial-photos-2012-2013/>, licensed by LINZ for re-use under the Creative Commons Attribution 3.0 New Zealand licence (CC BY 3.0 NZ)
Coordinate Datum: NZGD2000, Wellington Circuit Coordinates.
Origin: 41 18 04S 174 46 35E 800,000mN 400,000mE
Level Datum: LINZ (MSL) Wellington Vertical Datum 1953

REFERENCE :



Level 4, 2 Hunter St, Wellington
Tel. (04) 381 8560 Fax. (09) 307 0265
www.tonkintaylor.co.nz

DRAWING STATUS: CONCEPT DESIGN

CLIENT, PROJECT	WELLINGTON CITY COUNCIL ISLAND BAY PARADE UPGRADE	
TITLE	THE PARADE – ISLAND BAY Option C & D: Overall Plan	
SCALES (AT A3 SIZE)	1:5000	DWG. No. 1003072-91
REV.	0	