

4 Water

Council continuously distributes good quality water to Wellington's consumers and in doing so protects public health as required under the Health Act 1956. It does this by ensuring that an adequate supply of water is available to every household in the reticulated area. This includes purchasing bulk water from GWRC, distributing that water through the local reticulation system, managing the reticulation (pipes, pump stations, reservoirs, etc) and by ensuring that only clean drinking water is present in the water mains. The reticulated area is some 5,553ha. Figure 3 shows the Wellington water system.

4.1 Communities

The communities for the water services assessment are the reticulated area of the city and the non-reticulated communities of Makara, Ohariu, Horokiwi, South Karori and Glenside. The reticulated area of the city has been further broken down into water supply zones. Properties in the non-reticulated communities operate individually, relying on a combination of bore, stream and rainwater, with the exception of the Meridian village which has a combined system of water supply for 25 houses.

4.2 Standards

Council provisions for water supply and quality are based on provisions in the following documents;

- Building Act (1991)
- Health Act (1956)
- Drinking Water Standards for New Zealand (2000)
- Long Term Council Community Plan
- Business Plan
- Revenue and Financing Policy
- District Plan

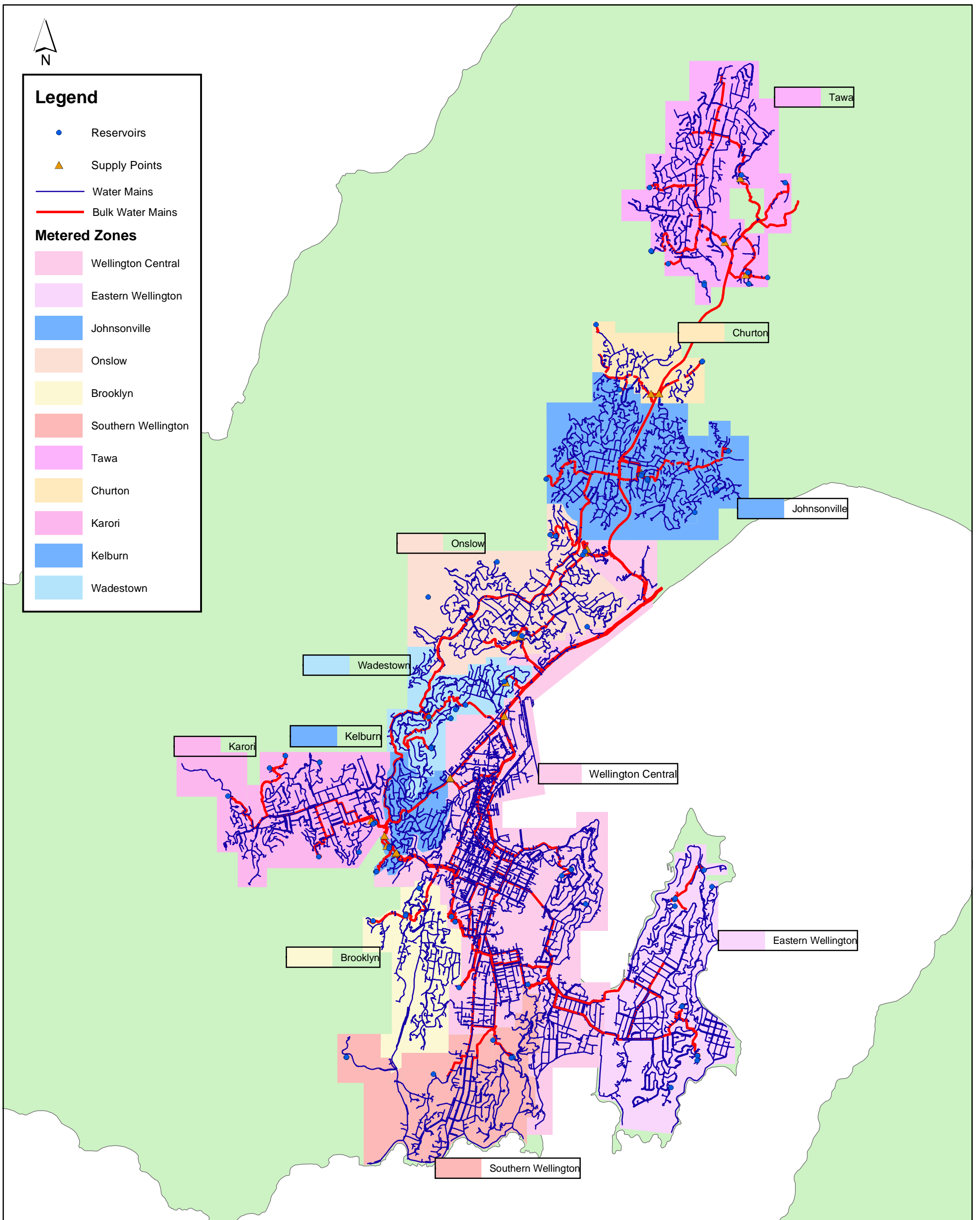
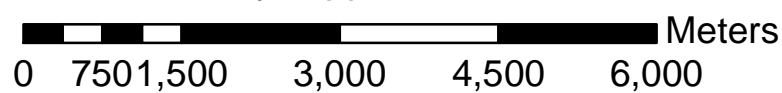


Figure 3. Water Supply Network

Schematic only, Approximate scale 1:70000



DATA STATEMENT

Property boundaries
Land Information NZ
Licence VN0853547/2
Crown Copyright reserved
Accuracy in urban areas: +/-1m
Accuracy in rural areas: +/-30m

Other data has been
compiled from a
variety of sources and
its accuracy may vary

Topographic data:
Wellington City Council
WCC copyright reserved
Accuracy: +/- 30cm

Any contours displayed
are only approximate
and must not be used for
detailed engineering design

Colour Orthophotography 1:500
flown Feb 2002 owned by
Terralink International Ltd and
used under licence by WCC